



68 West King Street  
Shippensburg, PA 17257

Change Service Requested

Presorted Standard  
U.S. Postage Paid  
Permit #58  
Shippensburg, PA



# CHAMBERLINE

*Shippensburg*

*Historic,  
Hometown,  
Happening!*

February 2026



Dear Chamber Members,

As we move through the early months of the year, I wanted to take a moment to share a quick reminder about the many ways to stay connected with your Chamber.

Staying engaged with your Chamber does not have to be complicated or time-consuming. At the Shippensburg Chamber, we understand that meaningful involvement looks different for every member, from large employers and small businesses to nonprofits and retailers, depending on schedules, seasons of business, and individual goals.

We encourage engagement in whatever way works best for you.

- Attend a Chamber event when you can and make a new connection
- Share your business news, milestones, or updates for Tuesday News or social media
- Add your events to the calendar for added visibility
- Take advantage of affordable marketing opportunities like Chamber inserts
- Keep your online directory listing current
- Share ideas or feedback to help guide our programs
- Reach out anytime you need a referral, resource, or connection

Every interaction contributes to a stronger, more connected Shippensburg business community.

If you'd like to get more involved or explore ways to maximize your membership, I'd be happy to meet with you.

Wendy Kipe  
President

## CHAMBER TIERED MEMBERSHIPS

**Platinum Level**  
Orrstown Bank  
Parx Casino  
Volvo Construction Equipment  
WellSpan Health

**Gold Level**  
Adams Electric  
Aramark Collegiate Hospitality  
Comcast  
Gannon Associates Insurance  
JLG Industries  
Lehman Construction Services, Inc.  
M&T Bank  
Members 1st FCU  
Shippensburg University  
Shippensburg University Foundation  
UPMC Carlisle  
Walmart Distribution Center #7380



## Chamber of Commerce Board of Directors and Staff

Chair:	Andrew Alosi..... Shippensburg University
Dirk Baumgardner.....Truck Mart, LLC/Car Starz	Duane Bock.....ACNB Bank
	Blake Fritz.....Shippensburg Area School District
Vice Chair:	Jared Eberts.....Lehman Construction Services, Inc.
Mark Goodhart.....Strickler Agency Inc.	William Humphrey.....Humphrey's Cleaning Service LLC
	Ellen Ile..... F&M Trust
Treasurer:	John Marshall..... Parx Casino
Chrystal Miracle.....Shippensburg University Foundation	John Massimilla.....WellSpan Health - Chambersburg Hospital
	Hunter Merideth, Esq.....Merideth Law, LLC
Secretary:	Andrea Mowen..... WellSpan Health
Ronald Taylor.....Shippensburg University	Steve Oldt.....Shippensburg Township
	Shaun Rogers.....Shippensburg Borough
	Shelby Yinger ..... Patriot Federal Credit Union

### President

Wendy R. Kipe  
chamber@shippensburg.org

### Office Manager

Monica Logan  
office@shippensburg.org

## Shippensburg Area Chamber of Commerce Committees

Awards Breakfast Committee	Cinco de Mayo Committee
Back to School Family Fun Day Committee	Community Christmas Party Committee
Central PA Chainsaw Carver Festival Committee	Membership Committee
Chamber Golf Tournament Committee	Programs & Promotions Committee
	Shippensburg Beer & Wine Festival Committee

**OUR MISSION** To provide members with services that promote and support economic vitality as well as develop Shippensburg as a great place to live, work, play, visit and invest.

**OUR VISION** To be recognized as the premier membership-based organization for professional networking, development, and stimulating economic growth in the vibrant and prospering business community of Shippensburg.

**SHIPPENSBURG.ORG**  
717.532.5509 | 68 West King Street | Shippensburg, PA





# Events Calendar

**February 17** - Tuesday Power Hour Networking Lunch, Nonna Ilva Restaurant

**February 25** - Wisdom Wednesday, Randy Wilson, REEL PD

**March 17** - Power Hour Networking Lunch, King and Saint Cafe

**March 19** - 68th Annual Awards Breakfast, Shippensburg University

**March 25** - Wisdom Wednesday UPMC, Wellness at Work

**April 16-18** - 6th Annual Central PA Chainsaw Carvers Festival

**April 21** - Power Hour Networking Lunch

**April 30** - Cinco De Mayo Regional Mixer, Volvo



**February 4** - Adult Pickleball Open Gym, Chambersburg Recreation Department

**February 7** - Valentines Vendor & Craft Show, Green Grove Gardens, Greencastle

**February 8** - Pet First Aid/CPR Certification Class, Mercersburg Sportsmen's Association

**February 13** - Dinner in the Greenhouse, Grayce Gardens, Chambersburg

**February 14** - CVBCA29th Annual Bowl-A-Thon, Nellie Fox Bowling Center, Chambersburg



**February 15** - TWEP Bingo, Mercersburg Sportsman's Clubhouse

**February 21** - Author Fair, Grove Family Library, Chambersburg

**February 3** - Free Tour Tuesday, Meadowbrooke Gourds, Carlisle

**February 4** - Community CPR/AED Certification Class, Members 1<sup>st</sup> Federal Credit Union Headquarters, Enola

**February 6 - 8** - Carlisle's Ice Art Fest 2026

**February 6** - Crazy Train: America's Ozzy Tribute, Carlisle Theatre

**February 11** - Wednesday Night Fun Run, Applalachian Running Company

**February 7 - 15** - Great American Outdoor Show, PA Farm Show Complex

**February 15** - Valentine's Pasta Making Class & Dinner, Central Wedge Cheese Shop

**February 21 - 22** - Motorama 2026, PA Farm Show Complex



**February 5** - John Mueller's Winter Dance Party, Luhrs Performing Arts Center

**February 5** - Stained Glass Workshop, Furnace Run Nature Center

**February 7** - Puppy Pals Live, Luhrs Performing Arts Center

**February 14** - WinterFest, Downtown Shippensburg

**February 14** - For the Love of Ship, Stewart Hall

**February 17 (2<sup>nd</sup> & 4<sup>th</sup> Tuesdays)** - Needle Arts Workshop, Old Spool Fabrics and Yarn



**February 24** - Shippensburg Community Town Hall

**February 26** - Wizard of Oz on Ice, Luhrs Performing Arts Center

**February 28** - Coldest Night of the Year Walk 2026, Community CARES



## Gannon Associates Insurance Welcomes New Regional Sales Director

**Brent Friend**

Regional Sales Director

Gannon Associates Insurance

Gannon Associates Insurance is proud to introduce Brent Friend, our new Regional Sales Director, to the Shippensburg Chamber of Commerce and its members. As an independent insurance agency, Gannon Associates Insurance works closely with individuals, families, and businesses to provide customized insurance solutions that protect what matters most today and into the future.

Brent brings a strong background in sales, account management, and leadership, with professional experience at LandPro Equipment, Sentry Insurance, and Xerox Corporation, along with honorable service in the United States Navy. He is licensed in property and casualty and life and health, allowing him to support a wide range of personal and commercial insurance needs.

At Gannon Associates Insurance, our approach is centered on understanding each client's unique risks and goals. Brent shares this philosophy and takes a consultative approach to insurance by helping clients understand their coverage, identify potential gaps, and find cost effective solutions that align with their needs. His passion for helping others and simplifying complex insurance decisions makes him a valuable resource for local business owners and families alike.

Brent is excited to become an active part of the Shippensburg community and to build long term relationships with fellow Chamber members. Whether it is protecting a growing business, reviewing employee benefits, or ensuring a family has the right coverage in place, Brent and the Gannon Associates team are committed to delivering trusted guidance and responsive service.

Originally from Chambersburg, Brent enjoys spending time with his wife, Carolyn, and their two children. Outside of work, he enjoys playing softball and golf and working on projects around his property.

We invite all of our fellow Shippensburg Chamber members to call or visit our Shippensburg office to meet with Brent and the Gannon Associates Insurance team for a complimentary insurance review. Let us help you protect what matters most so you can focus on what is next.





## DISC PERSONALITY

February 25, 2026 | 9 - 10 AM | Shippensburg Chamber

Join us as we explore DISC personality traits. This popular model breaks behavior into four core styles: Dominance, Influence, Steadiness, and Conscientiousness, helping us better understand ourselves and others.

Presented by: Randy J. Wilson, Maxwell Leadership Executive Program Facilitator, Owner REEL PD

Register Today!



More information  
717-532-5509

Visit our website  
shippensburg.org



## WISDOM WEDNESDAYS

A MONTHLY SERIES BY THE  
SHIPPENSBURG AREA CHAMBER  
OF COMMERCE

## BUSINESS COACH, TEACHER & TEAM BUILDER

25 Year USAF Veteran

Do You & Your Team Need Help with...

- Leadership Development?
- Teamwork & Communications?
- Understanding Self & Others?
- Strategic Planning?
- Declining Morale?
- DISC Personality Assessments?
- Eliminating silos within your org?



**LET'S PARTNER - I CAN HELP YOU!**

Certified with John Maxwell  
#1 Leadership Guru In The World



**RANDY WILSON | 717.414.6064 | REELPD.com**

Growing Area Professionals Since July 2015

D.O.I.T. of Shippensburg & Danny Kissel presents ...

# Winterfest

SHIPPENSBURG PENNSYLVANIA

**SATURDAY, FEB. 14, 2026**

**10:00 a.m. - 4:00 p.m.**

In collaboration with local artist, Danny Kissel and D.O.I.T. of Shippensburg are ecstatic to host the 2nd Shippensburg Winterfest!

**LIVE ICE CARVING**  
10 a.m. Downtown Shippensburg

**FOOD TRUCKS**  
Downtown Shippensburg (Specific Locations TBD)

**INTERACTIVE ICE GAMES**  
10 a.m. - 4 p.m. | Downtown Shippensburg

**ICE SCULPTURE STROLL**  
All along East and West King Street, Shippensburg

**LIVE ENTERTAINMENT**  
Downtown Shippensburg (Specific Locations TBD)

Admission is *Free!*

To join the fun, use this link:  
<http://bit.ly/3KVQwWI>  
or scan the QR Code!



Questions??

Email: [doitofshippensburg@gmail.com](mailto:doitofshippensburg@gmail.com)

FOLLOW US ON FACEBOOK:  
[HTTPS://WWW.FACEBOOK.COM/SHIPDOIT](https://www.facebook.com/SHIPDOIT)



*CTR Pictures*



### Portable power stations for power outages

If the power goes out due to an emergency, you don’t want to be left in the dark. Portable power stations are compact, rechargeable battery systems that can keep essential devices, like phones, medical equipment, lights and even refrigerators, running during an outage. They’re easy to use, safe to operate indoors and many can be recharged through any available wall outlet, your car or potentially via solar panels. Here’s what you need to know to choose the right one.

#### Portable power station basics

Think of a portable power station as a high-capacity rechargeable battery designed for emergencies, travel or off-grid use. Unlike traditional generators, they produce zero emissions, operate silently, need very little maintenance and don’t require gasoline.

Most models have three main components:

- Battery: Stores the energy.
- Inverter: Converts stored energy to usable household power.
- Ports and outlets: USB, AC, and DC connections for your devices.

Features to look for:

- Pass-through charging: Allows you to power devices while the unit is charging.
- Battery management system: Provides built-in safety features to prevent overcharging, overheating and shorting out circuits.

To maintain your system, store it in a cool, dry place and keep it clean to ensure maximum lifespan and performance.

#### How to choose the right power station system

The system that’s right for you depends on three things:

- What do you want to power (lights, phone chargers, refrigerator, medical equipment, etc.)?
- How long do you need power (a few hours during an outage or days without electricity)?
- Where will you use it (at home, at work, or during travel)?

When comparing battery systems, you’ll see two key ratings:

- Capacity: How long can it power your devices? This indicates how much total energy is stored in the battery. The higher the watt-hour (Wh) rating, the longer it can run your devices.

Output: Which devices can it power? This is the maximum amount of power the system can deliver simultaneously. The output must meet or exceed the wattage (W) required by the device you want to run.

Example: A battery with 500 Wh capacity and 1,000 W output could run a 1,000-watt device (like a small microwave) for about 30 minutes.

If you need to power multiple devices at once — like your refrigerator and lights — make sure their combined wattage stays below the unit’s output limit and that the total running time fits within the capacity.

Be mindful that some appliances, especially those with motors such as fridges or power tools, have a higher starting wattage than their running wattage. For safety, add a 20% buffer to your calculation and look for surge output capability.

#### Power station categories

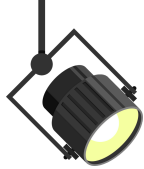
- Power stations range from lightweight units to hefty systems that may require wheels or two people to move. Remember that if you are in an extended power outage and you need to go elsewhere to recharge your device. Here’s a quick breakdown:
- Small capacity: 100-500 Wh
- Powers phones, laptops, Wi-Fi routers, small lights.
- Weighs less than 10 pounds.
- Medium capacity: 500-1500 Wh
- Powers mini fridge, small appliances, fans.
- Weighs 30-50 pounds.
- High capacity: 1500-3000+ Wh
- Powers a full-size fridge, microwave, multiple devices.
- Weighs up to 135 pounds.

#### Stay powered when it matters

Portable power stations are a safe and flexible way to keep essential devices running during an outage or emergency, and many are compact enough to take with you anywhere. When choosing a system, think about how much power you need, how long you need it to last and whether portability or extra features are important to you.







# MEMBER SPOTLIGHT



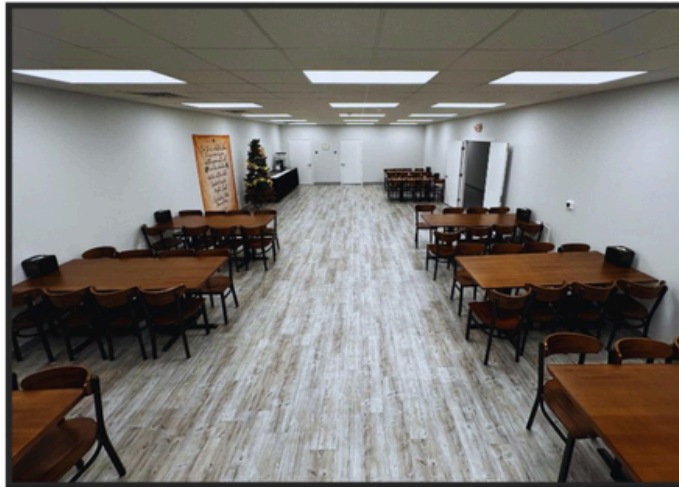
**NEW\***

## EVENT ROOM

717 - 300 - 3104  
HOURS 10AM - 7PM



**GUEST MIN 20 | GUEST MAX 64 | 3 HOURS MAX**



### Beverages Included with all Dinner Options\*

'Agua fresca' or PEPSI® products

#### DINNER PACKAGE #1

**ANY MONTERREY TACOS™ MENU ENTREE - \$18**

Scan barcode to view our full menu options...



#### DINNER PACKAGE #2 YOUR CHOICE OF...

**(CHICKEN OR STEAK) FAJITA | BIRRIA BEEF | SALSA VERDE**

**CHICKEN STEW** ...with a side of rice, beans & (3) tortillas\* - \$23

#### DINNER PACKAGE #3

**FRIED CHICKEN BREAST DINNER**

...with a side of mashed potatoes, grilled vegetables & bread slices\* - \$25

**ADD A COFFEE & DESSERT - \$6**

**HALF PRICE\*** for Ages 12 & under | **CONTACT US TO SCHEDULE**

**SHIPPENSBURG**  
Area Chamber of Commerce

**TUESDAY**

# POWER HOUR

## Networking Lunch

**FEBRUARY 17, 2026**

All Chamber members are welcome! Join us for Tuesday Power Hour on February 17, 2026, from 12 PM to 1 PM at Nonna Ilva Restaurant. Connect with local professionals, share ideas, and build meaningful relationships. Purchase your own lunch and enjoy great conversation.



**REGISTER NOW**

717-532-5509

office@shippensburg.org







# HEART DISEASE CAUSES 1 IN 5 DEATHS

GETTING YOUR HEART CHECKED COULD SAVE YOUR LIFE.  
TRUST THE EXPERTS AT UPMC.

Heart disease can be silent and deadly. Regular screenings at the UPMC Heart and Vascular Institute can monitor risk factors like high blood pressure, cholesterol, glucose, and elevated BMI that can so often lead to cardiovascular diseases. And we're here for you with skilled experts and advanced treatments to manage even the most complex heart conditions.

Your heart care matters. Schedule an appointment today at [UPMC.com/Heart](https://www.upmc.com/Heart).

**UPMC** | HEART AND  
VASCULAR INSTITUTE

## Renewing Members

Received to date — thank you!

Adams Electric Cooperative, Inc.

Alera Group

American Legion Post 223

Appalachian Running Company

BCM Payroll Services, Inc.

Beidel Printing House, Inc.

Clue Ridge Risk Partners, LLC

Boys and Girls Club of Chambersburg and  
Shippensburg

Chamberlin & Wingert Sanitary Services, LLC

Christy Lautenslager - Coldwell Banker Realty

Community CARES

CROSS, Inc.

Cumberland Valley Breast Care Alliance

Cumberland Valley Rails to Trails

Direct Mortgage Loans

El Mariachi Mexican Restaurant

Family Care Services

Fogelsanger-Bricker Funeral Home and  
Crematorium, Inc.

Forrester Farm Equipment

Franklin County Commissioners

Gannon Associates Insurance

GDC IT Solutions

Giant Food Stores, LLC

Glessner Technologies

Grand Point Church, Shippensburg

Himalayan Taekwondo

iWAT LLC

J.H. Rideout & Sons, LLC

Katies Place of Shippensburg, Inc.

Kinsley Construction

Lehman Construction Services, Inc.

Luhrs Performing Arts Center

Marco Technologies

Monterrey Tacos

Pague and Fegan Home & Hardware

Pennsy Supply Inc.

Porter's Carpet & Furniture

Procter and Gamble

Renaissance Events Facility

RKL, LLP

Safe Harbor, Inc.

Shippensburg Borough

Shippensburg Civic Club

Shippensburg Pump Co., Inc.

Shippensburg University Foundation

Signs Signs, LLC

Squires Electronics & Appliances

Suzu Wilkinson Lactation Consultant

TGC Facility Solutions

The Cumberland Shop

Tri County Community Action

UGI Utilities, Inc.

UPMC

Valley Heating & Cooling

Wash N Whirl

Wellmon Medical Associates

WSM Media Services

Zullinger-Davis-Trinh, P.C.

Thank you to our members for your continued support.



2026

# CENTRAL PA CHAINSaw CARVERS FESTIVAL

**APRIL 16–18**

**THURSDAY: 3:00 PM – 8:00 PM**

**FRIDAY: 10:00 AM – 8:00 PM**

**SATURDAY: 10:00 AM – 5:00 PM**

LIVE CHAINSAW CARVING  
PROFESSIONAL CARVERS FROM  
ACROSS THE COUNTRY  
ONE-OF-A-KIND CARVINGS FOR SALE  
& AUCTIONS  
SCAVENGER HUNT FOR ALL AGES  
BEARD CONTEST  
FOOD TRUCKS AND CRAFT VENDORS

**FREE  
ADMISSION  
& FREE PARKING**

**SHIPPENSBURG FAIRGROUNDS**

10131 POSSUM HOLLOW ROAD,  
SHIPPENSBURG, PA 17257

HOSTED BY SHIPPENSBURG AREA CHAMBER OF COMMERCE

FOR MORE INFORMATION :  
**SHIPPENSBURG.ORG**

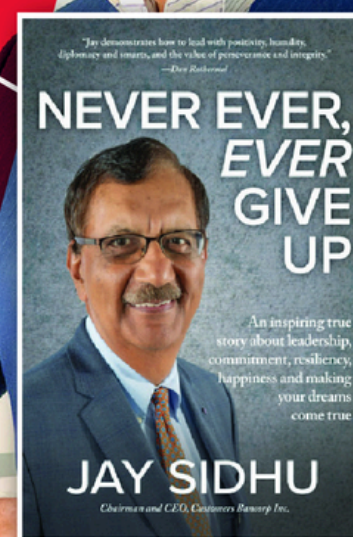


**“No matter what, never take your mind off your vision or your dream.”**

Experience an interactive and inspiring true story about leadership, commitment, resiliency, happiness, and making your dreams come true. Jay Sidhu, will share his stories, his principles, and his motivation. This event is based on his bestselling book *Never Ever, Ever Give Up* and follows Sidhu's American dream journey from India to higher education in America, and to leading a Fortune 500 company.

## LEADERSHIP BOOTCAMP WITH JAY SIDHU

AUTHOR OF *NEVER EVER, EVER GIVE UP*



**FRIDAY, FEBRUARY 20**

**11:30PM** Lunch and Networking

**12:00–3:00PM** Program

**Ceddia Union Building (CUB) 100**

All attendees will receive a free book and the opportunity to have it signed. Free and open to the public. **Registration is required.**



Scan the QR  
or register at  
[qr.ship.edu/Sidhu](http://qr.ship.edu/Sidhu)



Shippensburg University is a member of Pennsylvania's State System of Higher Education and an equal opportunity educational institution. Direct requests for reasonable accommodations and other inquiries to the Office of Accessibility Resources, Shippensburg University, 1871 Old Main Drive, Shippensburg, PA 17257-2299, (717) 477-1364, [oar@ship.edu](mailto:oar@ship.edu).





## Member to Member Discounts

*This program allows Chamber members to offer and receive exclusive discounts, creating savings while strengthening relationships within the local business community.*



iWAT Solutions LLC is offering a full "Technology Assessment" to include technology infrastructure, complete evaluation of computers, security, websites and email accounts and so much more – a \$1,200 value! Contact Kylie Wilson at [kylie@iwatllc.com](mailto:kylie@iwatllc.com) for additional details. Learn more about iWAT Solutions LLC at [iwatllc.com](http://iwatllc.com)



Chambersburg Neighbors and Shippensburg Neighbors powered by Best Version Media is offering 25% off all Campaigns for Shippensburg Chamber Members.

Campaigns include:

- Monthly Publications
- Facebook / Instagram Ads
- Display Ads
- BVMSPORTS.COM
- Online presence: Listings & Reviews and Reputation Management

Contact Grace Waller for more information at: [gwaller@bestversionmedia.com](mailto:gwaller@bestversionmedia.com) or (973) 418-9828.

**Interested in offering a Member-to-Member discount?**  
**Contact [office@shippensburg.org](mailto:office@shippensburg.org) or call 717-532-5509,**  
**and we'll be happy to include you.**

**HISTORIC | HOMETOWN | HAPPENING**



# 68th Annual AWARDS BREAKFAST

Enjoy a delicious breakfast, an awards presentation recognizing outstanding businesses, nonprofits, and individuals, and a year-in-review video, highlighted by a keynote address.

March 19, 2026

7:30AM - 9:30AM

Tuscarora Room, Reisner  
Dining Hall, Shippensburg  
University

Register Here

\$30 per person  
Registration required



[shippensburg.org](http://shippensburg.org)



Keynote Speaker  
**Luke Bernstein**  
President and CEO,  
Pennsylvania Chamber of  
Business and Industry



# SHIPPENSBURG AMERICA250 PARADE

Celebrating America's 250th Anniversary on Flag Day



**Sunday, June 14, 2026**  
**2:00 PM ★ Downtown Shippensburg**

What to Expect



- ★ Floats, music, and community groups
- ★ A celebration of Shippensburg's history and spirit
- ★ Family-friendly fun for all ages



★ Prizes Awarded in Each Division! ★

This parade is part of a series of special events planned by the Shippensburg America250 Committee as our community comes together to honor our nation's historic milestone.

Join us as a parade participant! Scan the QR Code:

No registration fee to participate.

Questions? Email [chamber@shippensburg.org](mailto:chamber@shippensburg.org)



*Presented by the Shippensburg America250 Committee*

This parade is funded, in part, by the  
Cumberland Area Economic Development Corporation.

**CAEDC**  
CUMBERLAND VALLEY  
PENNSYLVANIA



**Shippensburg  
America250  
Committee**  
Honoring Our Nation's 250th Anniversary



**250 PA**  
FRANKLIN COUNTY



## Advertise in The Chamberline

### Why Chamberline Advertising Works

- Consistent monthly visibility in 12 printed issues throughout the year
  - One annual payment delivers a full year of exposure
- Trusted local readership of Chamber members, business leaders, and community decision-makers
- Distributed to **300 member businesses/organizations** monthly

### ANNUAL ADVERTISING RATES

Ad Size	Dimensions	Annual Rate
1/8 Page	2.75" x 4.25"	\$175
1/4 Page	4.25" x 5.5"	\$350
1/2 Page	5.5" x 8.5"	\$600
Full Page	8.5" x 11"	\$1,000

#### Flat Inserts Welcome!

Add an 8.5" x 11" insert for just \$60 per issue.

Provide 300 copies by the 22nd and we'll handle inserting and mailing for you.

### Reserve Your Ad Space Today

#### Select Advertising Option:

- ☐ 1/8 Page ☐ 1/4 Page ☐ 1/2 Page ☐ Full Page  
☐ 8.5" x 11" Flat Insert (\$60 per issue)

Business Name: \_\_\_\_\_

Contact Person: \_\_\_\_\_

Email: \_\_\_\_\_

Phone: \_\_\_\_\_

Submit your completed form to:

Shippensburg Area Chamber of Commerce, 68 W. King St., Shippensburg, PA 17257  
717-532-5509 or [office@shippensburg.org](mailto:office@shippensburg.org)





# TOUCH A TRUCK

Saturday, May 30, 2026

FREE  
EVENT!

Rain or Shine

A free, family-friendly event featuring trucks, equipment, and vehicles to see, touch, and explore in Downtown Shippensburg!

10 AM - 1 PM

Sensory-Friendly Hour: 10-11 AM



# TOUCH A TRUCK

## SPONSORSHIP FORM

Saturday, May 30, 2026 | 10 AM - 1 PM | Downtown Shippensburg



Climb aboard and join us as a sponsor for Touch-A-Truck in downtown Shippensburg! This family-friendly event brings our community together while showcasing local businesses, first responders, and the vehicles kids love to explore.

Your sponsorship helps make this exciting day possible and gives your business some **wheel-y great visibility.**

Title Sponsor – SOLD

- Exclusive presenting sponsor of Touch-A-Truck



Platinum Sponsor – \$750 (multiple available)

- Logo displayed on event materials, including the map, event signage, and event T-shirt
- Opportunity to include an item or handout in the first 200 kids' giveaway bags
- Prime placement of your information booth at the event
- Recognition in event press releases, media coverage, and social media
- Two (2) complimentary event T-shirts

Gold Sponsor – \$500 (multiple available)

- Logo displayed on select event materials, including the map and event T-shirt
- Preferred placement of your information booth at the event
- Recognition in event press releases and social media
- One (1) complimentary event T-shirt

Community Partner – \$150 (multiple available)

- Business name listed on the event map
- Recognition in event press releases and social media

### Sponsor Information

Sponsor Name: \_\_\_\_\_

Contact Person: \_\_\_\_\_

Email: \_\_\_\_\_

Phone: \_\_\_\_\_

### Sponsor Level

☐ PLATINUM – \$750

☐ GOLD – \$500

☐ COMMUNITY PARTNER – \$150

Please make checks payable to "Shippensburg Area Chamber of Commerce" and note "Touch-A-Truck", and mail or drop off to **68 W King St, Shippensburg, PA 17257**. You can also email the form back to **chamber@shippensburg.org** and pay via phone by contacting the Chamber at (717) 532-5509.