



68 West King Street
Shippensburg, PA 17257

Change Service Requested

Presorted Standard
U.S. Postage Paid
Permit #58
Shippensburg, PA



CHAMBERLINE

August 2025



To our community and beyond,

There's a special kind of energy in the air right now (and it's not just the buzz of construction at Library Square where our new amphitheater is taking shape!). *It's the spirit of entrepreneurship, alive and thriving right here in Shippensburg!*

With new businesses moving in, property owners investing in fresh ideas, and longtime businesses expanding their reach, it's clear we're in a season of exciting growth. And with our university students returning, both new AND familiar faces, downtown is about to get even more vibrant.

But what's most inspiring is the spark we're seeing in our youngest residents. Across our local learning communities, students are being offered a wide range of educational, hands-on, and creative opportunities to build their business skills: from mock interviews and student "Shark Tank" rounds at various levels, to leadership development opportunities and innovative electives at the middle school, high school, and college.



Just last month, we had the incredible opportunity to celebrate that spirit in action during our Sun & Fun Fest, an event that will certainly be returning next Summer, where hardworking kids braved the summer sun to sell lemonade and handmade goods with pride and purpose.

Through all of this, one thing is clear: the next generation is ready. Ready to dream, build, and lead. Entrepreneurship in Shippensburg isn't just a trend. It's a way of life. It's woven into the fabric of our businesses, our students, and our future. And watching that spirit grow is a powerful reminder that **hope and opportunity are alive and well in our community.**

Here's to building, dreaming, and doing...together.

To the next chapter!

Michaela Wetzel
Community Coordinator



SHIPPENSBURG.ORG
717.532.5509 | 68 West King Street | Shippensburg, PA



Chamber of Commerce Board of Directors and Staff

Chair:	Andrew Alosi.....Shippensburg University
Dirk Baumgardner.....Truck Mart, LLC/Car Starz	Blake Fritz.....Shippensburg Area School District
	Kathy Coy.....Office of the Mayor
Vice Chair:	Jared Eberts.....Lehman Construction Services, Inc.
Mark Goodhart.....Strickler Agency Inc.	William Humphrey....Freedom Bookkeeping Solutions LLC and Humphrey's Cleaning Service LLC
Treasurer:	Ellen Ile.....F&M Trust
Chrystal Miracle.....Shippensburg University Foundation	John Marshall.....Parx Casino
	John Massimilla.....WellSpan Health - Chambersburg Hospital
Secretary:	Andrea Mowen.....WellSpan Health
Ronald Taylor.....Shippensburg University	Steve Oldt.....Shippensburg Township
	Nicole Smith.....Celebration Villa of Shippensburg
	Shelby YingerPatriot Federal Credit Union

President
Wendy R. Kipe
chamber@shippensburg.org

Office Manager
Monica Logan
office@shippensburg.org

Community Coordinator
Michaela Wetzel
communitycoordinator@shippensburg.org

Shippensburg Area Chamber of Commerce Committees

Awards Breakfast Committee
Back to School Family Fun Day Committee
Central PA Chainsaw Carver Festival Committee
Chamber Golf Tournament Committee

Cinco de Mayo Committee
Community Christmas Party Committee
Membership Committee
Programs & Promotions Committee
Shippensburg Beer & Wine Festival Committee

OUR MISSION To provide members with services that promote and support economic vitality as well as develop Shippensburg as a great place to live, work, play, visit and invest.

OUR VISION To be recognized as the premier membership-based organization for professional networking, development, and stimulating economic growth in the vibrant and prospering business community of Shippensburg.

Shippensburg
Historic,
Hometown,
Happening!

CHAMBER TIERED MEMBERSHIPS

Platinum Level
Orrstown Bank
Parx Casino
Volvo Construction Equipment
WellSpan Health

Gold Level
Adams Electric
Aramark Collegiate Hospitality
Comcast
Gannon Associates Insurance
JLG Industries
Lehman Construction Services, Inc.
M&T Bank
Members 1st FCU
Shippensburg University
Shippensburg University Foundation
UPMC Carlisle
Walmart Distribution Center #7380



Events Calendar

August 9 - Back to School Family Fun Day, Shippensburg Fairgrounds

August 27 - Wisdom Wednesday, Dare 2Be Tick Aware with Guardian Mosquito and Tick Control, Shippensburg Area Chamber of Commerce

September 11 - Cumberland County Mega Mixer, Members 1st Headquarters, Enola

September 20 - Shippensburg Beer and Wine Festival, Shippensburg Fairgrounds



September 24 - Wisdom Wednesday, Top of Mind Awareness with Grace

Waller, Shippensburg Area Chamber of Commerce

October 3 - Annual Golf Tournament, Eagles Crossing Golf Course, Carlisle

October 21 - 4th Annual South Central PA Women in Business Conference

August 2 - Greencastle Antrim 42nd Triennial Old Home Week, Downtown Greencastle

August 2 - North Square Farmers Market, Fort Chambers Park, Chambersburg

August 2 - Market at the Park, Main Street Park, Waynesboro

August 4 - Old Home Week Association Presents: The Fabulous Hubcaps, Green Grove Gardens, Greencastle

August 10 - 50th Annual Mercersburg Lions Club Fair, Mercersburg Lions Club Park, Mercersburg



August 12 - Ice Cream Social, Williamson Ruritan Club, Williamson

August 16 - Franklin County Truck Convoy, Make a Wish, Chambersburg

August 28 - Judy Elden Annual Memorial Summer Concert, Renfrew Museum and Park, Waynesboro

August 2 - Saturday Evening Live Entertainment, Whiskers Brewing, Newville

August 3 - 37th Annual Grand Sousa Concert Presented By: The Carlisle Town Band, Carlisle Theatre

August 9 - T.H.E. Pro Wrestling (Time-Honored Excellence), Carlisle Expo Center, Carlisle

August 9 - Perseids Meteor Shower Virtual Event, Kings Gap Environmental Education Center, Carlisle

August 14 - Cumberland County Waterways: Their Importance and Improvement, Bosler Memorial Library, Carlisle

August 15 - *Mamma Mania!*, NYC's Ultimate ABBA Tribute, West Shore Theatre,

August 16 - Monitoring Monarchs, Kings Gap Environmental Education Center, Carlisle



August 1 - Shippensburg First Fridays, Shippensburg Station

August 4 - The Thrift Shop and Rummage Sale at Katie's Place, Shippensburg

August 5 - National Night Out, Shippensburg

August 5 - Tie Dye Camp, Coy Public Library, Shippensburg

August 7 - Bereaved Spouses Support Group, Drew Michael Taylor Foundation, Shippensburg

August 8 - Revolutionary War Cooking and Baking, Shippensburg History Center



August 9 - Widow Piper's Tavern Tours - Shippensburg Civics Club

August 10 - Don't Pop Your Top: Dealing With Anger and Other Big Feelings, Drew Michael Taylor Foundation



GOLF -Tournament-



FRIDAY

OCTOBER 3, 2025

**Eagles Crossing Golf Club
501 Conodoguinet Avenue,
Carlisle, PA**

**\$90 Per Player
Includes: Lunch,
driving range,
greens fees, &
cart**

**All Golfers
Welcome!**
Golf Attire Required

**SHOTGUN START AT
9:00 AM**

Proceeds benefit the Shippensburg Chamber, which supports local businesses, agriculture, industry, and education through programs and services that strengthen our community.

Checks Payable to:
Shippensburg Area Chamber of Commerce
68 West King St.,
Shippensburg, PA 17257

Questions: (717) 532-5509 or chamber@shippensburg.org

I will sponsor the Shippensburg Area Chamber of Commerce Golf Tournament.

Business/Individual: _____ Contact Person: _____
Address: _____ Phone Number: _____

SOLD Title Sponsor (WellSpan Health)

___ \$700 Gold Sponsor (includes 4 players, booth space & signage at the hole)

___ \$500 Silver Sponsor (includes 4 players & signage at the hole)

___ \$100 Hole Sponsor (signage at hole)

___ I will donate 4 similar items for a team prize

___ I will donate a door prize

Please complete the following section to confirm your team: # of entrants: ___ x \$90 = ___

Player 1 Name: _____

Player 3 Name: _____

Player 2 Name: _____

Player 4 Name: _____

BUSINESS COACH, TEACHER & TEAM BUILDER



25 Year USAF Veteran

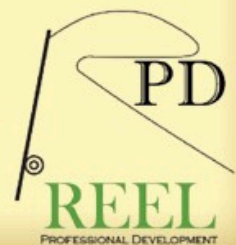


Do You & Your Team Need Help with...

- Leadership Development?
- Teamwork & Communications?
- Understanding Self & Others?
- Strategic Planning?
- Declining Morale?
- DISC Personality Assessments?

LET'S PARTNER - I CAN HELP YOU!

Certified with John Maxwell
#1 Leadership Guru In The World



RANDY WILSON | 717.414.6064 | REELPD.com

Growing Area Professionals Since July 2015

MEGA MIXER

CARLISLE | MECHANICSBURG
SHIPPENSBURG | WEST SHORE

THURSDAY, SEPT. 11 | 5 - 7 PM | MEMBERS 1ST HEADQUARTERS

SCAN
ME!



DARE 2BE TICK AWARE

August 27, 2025 | 9 - 10 AM | Shippensburg Chamber

Learn how to prevent tick bites and protect yourself, your family, and your pets from Lyme and other tick-borne diseases.

PRESENTED BY THE PA LYME RESOURCE NETWORK

Register
Today!



More information
717-532-5509

Visit our website
shippensburg.org



WISDOM WEDNESDAYS

A MONTHLY SERIES BY THE
SHIPPENSBURG AREA CHAMBER
OF COMMERCE



TOP OF MIND AWARENESS

September 24 | 9 - 10 AM | Shippensburg Chamber

Learn how to keep your business "Top of Mind" with consumers through consistent branding, community presence, and effective brand-building strategies.

PRESENTED BY GRACE WALLER, PUBLISHER OF
CHAMBERSBURG AND SHIPPENSBURG NEIGHBORS

Register
Today!



More information
717-532-5509

Visit our website
shippensburg.org

CIVIC CLUB of SHIPPENSBURG

Widow Piper's Tavern
Built 1735

FREE TOURS

2nd Saturday
of Each Month

April thru July
and September
thru November

1:00pm - 4:00pm

Private and home school
group tours available,
call 717.532.5978

352 East King Street
Shippensburg - 717.530.7900

ShippensburgCivicClub.com



Cumberland County's First
Courthouse 1750-1751

Stay safe at work

Employers usually offer orientation and training for new employees, but sometimes electrical safety is overlooked. Beyond burning popcorn in the microwave and annoying all your coworkers with the stench, Adams Electric Cooperative and Safe Electricity remind you of the following on-the-job electrical safety tips, which can also apply at home:

IN GENERAL

- Do not complete electrical work if you are not qualified. Employees asked to change light fixtures, repair wiring, install outlets or other types of electrical work can be injured on the job, or worse. It is best to leave electrical work to a professional electrician.

INDOORS

- Many offices still have landlines. Try not to talk on a landline phone during a major storm. Many people think this is a myth, but it's not — a bolt of lightning that strikes a telephone line can come through the wires and enter a headset. That jolt could burst your eardrum or even cause cardiac arrest.
- Use high quality extension cords with appropriate gauge and length endorsed by a reputable laboratory.
- Do not run extension cords under carpet. The cords could get damaged under the carpet or overheat, causing a fire.
- Extension cords should be used as a temporary solution. If your workplace needs more outlets, consider having a professional electrician install them.
- Electrical cords can also be a tripping hazard; consider adding heavy duty cord covers.
- Don't overload the electrical system by plugging too many items in or plugging in items that draw too much power.
- Speaking of drawing too much power, ask before using a space heater at work, or better yet, just don't do it.
- Do not use damaged cords, plugs, outlets or outdated electrical equipment.
- Do not yank on an electrical cord to unplug something; grasp the plug instead.

OUTDOORS

- If you are doing work outdoors, be vigilant about power line locations. Window washers, roofers, painters and other workers have been injured and killed after making contact with power lines either with a tool or object they were holding or by direct contact.
- If your employer asks you to trim trees, do not trim any foliage or limbs within 10-20 feet of a power line in any direction. Trimming near power lines should be left to OSHA-certified line clearance professionals.
- If you operate farm machinery or drive a truck that has hydraulic beds or lifts (dump truck, for example), bins (grain truck) or arms/extensions (garbage truck, concrete truck), always be aware of power line locations and use a spotter. Contact with a power line can kill. If your truck, tractor or equipment does come in contact with a line, DO NOT get out. Call 9-1-1 and wait for the power to be deenergized so you can safely exit.
- If you rent/use scaffolding or a boom lift, always look up and be aware of power line locations.

AROUND WATER

- Water and electricity don't mix, and it greatly increases the chance of shock. Keep all electrical equipment away from standing water or damp conditions (indoors or outdoors) and do not operate equipment with wet hands.
- Make sure any outlet that is near a water source (and all outdoor outlets) are GFCI (ground-fault circuit interrupter) protected.

For more information about electrical safety, visit safeelectricity.org.



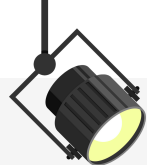
DELIVERING MORE CARE FOR WOMEN

Women's Health Is More Than Delivering Babies

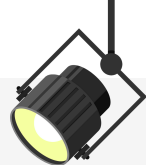
At UPMC Magee-Womens, we offer relief for those symptoms you've been told are just a part of life, solutions for issues like pelvic pain, and more options for accessing specialists, including through our virtual care centers. When it comes to your health, we believe every woman deserves more exceptional care ... and that's what we deliver.

UPMC | MAGEE-WOMENS

Find your specialist at UPMC.com/DeliveringMore



MEMBER SPOTLIGHT



SHIPPENSBURG LIONS CLUB

IN 1925, HELEN KELLER CHALLENGED THE LIONS MEMBERS TO BECOME "THE KNIGHTS IN THE FIGHT AGAINST BLINDNESS". ONE OF THE WAYS THE SHIPPENSBURG LIONS CLUB LIVES OUT THIS MISSION IS THROUGH THE COLLECTION OF UNWANTED EYEGLASSES. SINCE THEN, THE LIONS CLUB HAS CONTINUED TO SERVE THEIR COMMUNITY IN VARIOUS FORMS.

We take on global challenges together.

In addition to serving locally, Lions support five global causes.



DIABETES

Reduce the prevalence of diabetes and improve those diagnosed.



ENVIRONMENT

Sustainably protect and restore our environment to improve the well-being of all communities.



HUNGER

Ensure all community members have access to nutritious food.



VISION

Prevent avoidable blindness and improve the quality of life for people who are blind and visually impaired.



CHILDHOOD CANCER

Help those affected by childhood cancer survive and thrive



SCAN TO VISIT OUR WEBSITE



LOCAL CONTRIBUTIONS:

- PROVIDE EYE EXAMS AND EYEGLASSES TO THOSE IN NEED
- VISION SCREENINGS AT ELEMENTARY SCHOOLS
- "VISION AS YOU AGE" TALKS TO LOCAL SERVICE CLUBS AND RETIREMENT HOMES
- ANNUAL SPAGHETTI DINNER FUNDRAISER
- AWARD ANNUAL SCHOLARSHIP TO A LOCAL SENIOR ATTENDING SHIPPENSBURG UNIVERSITY
- SPONSOR PA LIONS BEACON LODGE CAMP FOR SPECIAL NEEDS INDIVIDUALS
- SPONSOR LOCAL CUB SCOUT PACK 251
- OPERATE CONCESSION STAND AT HOME HIGH SCHOOL FOOTBALL GAMES
- ASSIST IN FUNDING THE REPAIR AND UPKEEP OF THE MEMORIAL PARK IN SHIPPENSBURG.
- COLLECT USED EYEGLASSES & HEARING AIDS FOR USE AROUND THE WORLD
- CLEAN 2 MILES OF LOCAL ROADS IN ADOPT-A-HIGHWAY PROGRAM

VISIT US AT THE BACK-TO-SCHOOL FAMILY FUN DAY AT THE SHIPPENSBURG FAIRGROUNDS ON AUGUST 9TH FROM 11 AM-2 PM



BACK TO SCHOOL

FAMILY FUN DAY



FEATURING

Educational & Interactive Exhibits

Free School Supplies

Free Entertainment

Free Pizza

RAIN OR SHINE



**Saturday
August 9, 2025**

11 AM – 2 PM



**Shippensburg
Fairgrounds**

10131 Possum Hollow Rd, Shippensburg



**FREE event
for families & children**

A free, fun opportunity for families to explore local programs and services for children and youth. The event will feature a variety of organizations sharing resources and information.





MEMBER SPOTLIGHT



Hann's On Portraits

Nestled in the heart of Shippensburg, Hanns On Portraits is more than a photography studio - it's a space where life's most cherished moments turn into timeless keepsakes. Contact Amanda to schedule your personalized session today!

AMANDAS SERVICES :

- Family Portraits
- Senior & Graduation Sessions
- Newborn & Maternity Shoots
- Event Photography
- Custom & Seasonal Mini Sessions
- Engagement Photography
- Studio & Outdoor Portraits
- Wedding Photography
- Children's Photography

WHY HANNS ON?

- Locally owned and community-focused.
- Customized sessions tailored to your vision.
- Warm, inviting studio space.
- Specializes in children's photography.
- Offers outdoor and water shoots.



Contact Amanda at 717-860-7019

Website: <http://www.hannsonportraits.com/>

AUGUST 2025

SUN & FUN IN DOWNTOWN SHIP!

Michaela Wetzel, Community Coordinator



Jolie Boudin



Kaitlyn Kipe



Aliyah Gossert

Our summer celebration brought smiles, sunshine, and a whole lot of heart to downtown Shippensburg at this year's Sun & Fun Fest!

As referenced in the welcome letter, one of the most inspiring parts of the day was watching our youngest entrepreneurs in action. From brightly decorated lemonade stands to handmade goods, these future business owners truly brought their A-game. The energy was contagious, and it was a joy to see families, friends, and passersby stop to support their hard work and creativity.

Adding even more color to the day were our talented chalk artists, who turned the sidewalks into works of art. From flamingos to frogs, their imaginations brought downtown to life with vivid drawings and big talent. Congratulations to our contest winners, named & pictured above!

We're also grateful to the community partners who made this day even brighter: *The Cumberland Shop* not only participated in the lemonade festivities, but kept visitors cool with their AC and shared a fun, colorful giveaway. *The Shippensburg History Center* brought the past to life in full costume, showing up with enthusiasm (and plenty of knowledge) despite the summer heat. And the *Shippensburg Area Chamber of Commerce* brought the fun with yard games, sunny giveaways, and plenty of good vibes.

Thank you to everyone who came out to support, explore, and enjoy downtown. We're already looking forward to the next round of fun!



**Keep an eye on our Facebook page to keep up with all of our exciting events and for opportunities to get involved, or email communitycoordinator@shippensburg.org!*



Shippensburg Chamber of Commerce, DOIT and SADCO present:



SHIPPENSBURG BEER & WINE FESTIVAL

**SATURDAY
SEPT
20
2025**

**VIP
Admission
12PM**

**General
Admission
1PM - 5PM**

Food, Live Music & Cornhole

Admission:
\$25.00 advance tickets
\$30.00 at gate tickets
\$35.00 VIP (Pre-sale only)
\$10.00 Designated Driver

Purchase tickets:
• Online at [Eventbrite.com](https://www.eventbrite.com)
• Chamber of Commerce
68 W. King St.,
Shippensburg

Shippensburg Fairgrounds
10131 Possum Hollow Rd, Shippensburg, PA
Bring Your Lawn Chairs or Blankets



No Pets. No Coolers. No Admittance Under 21. ID's Required.



Franklin County Legislative Breakfast

Patriot
FEDERAL CREDIT UNION
Grand Sponsor

THUR | 23 | OCT

7 - 9 A.M. - ANTRIM BIC CHURCH

Join the Franklin County chambers of commerce for a legislative breakfast featuring our state elected officials discussing important issues affecting the business climate in south central Pennsylvania.*



Senator Doug
Mastriano



Representative
Rob Kauffman



Representative
Rich Irvin



Representative
Chad Reichard

MODERATED BY: CLINT BARKDOLL, PARTNER AT KULLA, BARKDOLL, & STEWART P.C.

\$35 CHAMBER MEMBERS - \$50 NON-MEMBERS

REGISTER AT: [CVBALLIANCE.ORG/EVENTS](https://www.cvballiance.org/events) OR CALL 717-264-7101

SPONSORSHIP OPPORTUNITIES AVAILABLE. CONTACT ANGIE AT:
ASCHAEFFER@CHAMBERSBURG.ORG OR CALL 717-264-7101

SPECIAL THANKS TO:



*Officials' attendance is subject to change.

CHAMBER HIGHLIGHTS



JUNE’S MORNING MIXER

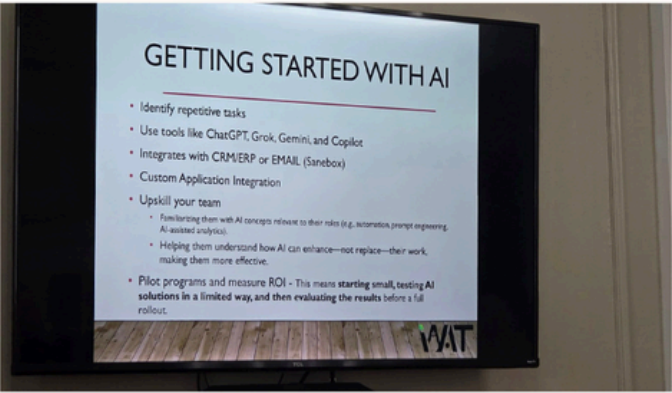
Thank you to everyone who joined us on the morning of June 27 for our Morning Member Mixer. We appreciate you starting your day with us and connecting with fellow members.

Save the date for our next Morning Member Mixer, Friday, December 12!



WISDOM WEDNESDAY RECAP: AI FOR EVERYDAY SOLUTIONS

Thank you to everyone who attended this month’s Wisdom Wednesday: AI for Everyday Solutions with Robert Fulcher, CEO of iWAT! A big thank you to Rob for leading an informative session and to all who joined us for this exciting dive into the power of AI in business!



United Way

Kick-off MIXER

Information on local services / Open to the public
Door prizes / Free Giveaways

Thursday, October 2, 2025
5:00 - 6:00 pm

WellSpan Shippensburg Health Campus
Shippensburg, PA 17257

